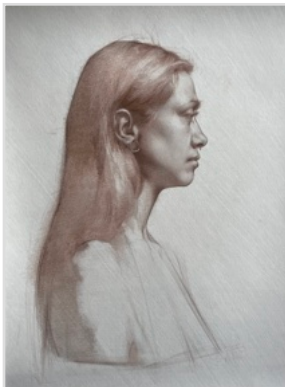


Suggested Materials List

In Depth: Portrait Drawing from Life with Chelsea Bard

MATERIALS FOR PART ONE (APRIL 13 & 14) AND PART TWO (APRIL 15-17)

- Pencils: 4H, 2H, H, HB, B, (2B and 4B if Staidler) in any brand will do. (Faber Castell, TomBow and Black Wing are my pencils of choice)
- General's White Chalk
- Pencil/Lead Holder: Cretacolor Wooden Holder, General's Pencil Extender
- Staedtler Mars Sandpaper Lead Pointer – Extra Fine, 12 Sheets
- Utility Knife or Razor Blade
- Cooking Skewer or thin knitting needle for measuring. Thin Wooden or metal sticks.
- Kneaded Eraser
- Mono Zero Mechanical Eraser Round, 2.3 mm
- Paper Stumps, Assorted sizes.
- Brush(s) for massing in: Bristle & synthetic assorted sizes.
- Masking Tape
- Paper options : any size between 9"x12" to 18"x24". Any one choice of...
 - Strathmore Drawing Paper
 - Fabriano Artístico, Arches or Stonehenge Hotpress 140 lb. Watercolor Paper
 - Canson Mi Teintes pre toned paper (Preferred colors are Eggshell Grey, Flannel Grey, Lily, Moonstone, Moon Grey, Pearl, Sky Grey, Cloud White, White)



ADDITIONAL MATERIALS FOR PART TWO (APRIL 15-17)

Three Color Drawing Additional Materials

- Prisma Color-erase Pencils in any range of brown, red and black. (Van dyck Brown, Brown and Terracotta suggested)

Reductive Drawing Additional Materials

- Generals Charcoal Powder
- A Chamois, clean rag (natural or white) or Paper Towels